

FESTIVAL OF CONTEMPORARY PERFORMANCE

LIVED ART PROGRAMME

19 - 23 June



THE
PERFORMANCE
CENTRE


theperformancecentre.org

WELCOME TO THE 2013 LIVED ART FESTIVAL OF CONTEMPORARY PERFORMANCE

Lived Art celebrates the achievements of graduating students from across The Performance Centre's programmes in Dance, Theatre, Music and Production, and provides an intensive, public and professionalised context through which to enjoy and engage with their work.

The Performance Centre is developing a reputation for interdisciplinary invention, social-engagement and the making of new and challenging work. I know that this year's Festival programme bears testament to these qualities that are vitally important in the current social and economic climate.

A pioneering spirit has been with these students from the outset, being as they are, the first to complete a full three-year course of study here in The Performance Centre. Being 'the first' is rarely straightforward, and with excitement and opportunities, it brings challenges and anxieties. The students have taken all this on all with the same energy, intelligence and courage that is manifest in their work, and for this the University is immensely proud. I have little doubt that these artists, having now completed degree education more progressive and interrogative than most, are very well placed to make increasingly meaningful and significant contributions to shaping the future of their respective fields of practice. I'd like to thank all who have been involved in this event, which has, as is traditional, been a student-led initiative, and I encourage all who attend to see as much work as possible and join us in celebrating our students achievements and another significant milestone in our recent history.



Dr Larry Lynch, Head of the Department of Performance

LIVED ART EXTENDED

The Lived Art Festival team would like to ask performers and visitors, whether real or virtual, to share ideas, thoughts, comments, questions, photographs, videos and stories surrounding the festival on our social media channels or otherwise; look out for the comments books and blackboard in The Performance Centre.

By liking The Performance Centre facebook page and following us on twitter (@FalTPC) using the hashtag #livedart you'll be able to join, contribute to and extend the conversations that the work starts.

FIND OUT MORE



Twitter @FalTPC
Twitter @Livedart
Hashtag #Livedart
Youtube FalPerformanceCentre

facebook

facebook.com/ThePerformanceCentre



Emma Jane Martin: The Drawing Room image © Steve Tanner

Thu 20, Fri 21 & Sat 22 June

FERAL STAGE

12:00 - 15:00 & 17:00 - 21:00

The Performance Centre café

At the heart of the festival in The Performance Centre café, the Feral Stage hosts a pop up programme of wild acts and art cabaret morsels. Feast on interdisciplinary interludes, performance lectures, psychedelic folk, cabaret rock, spoken word, scratches, itches, live interviews, and some Feral Special Guests who will make your fur stand on end.

The Feral Stage is a new platform for Lived Art 2013. Curated by Katie Etheridge, it features fresh work from Falmouth University's current and emerging performance practitioners.

Your Feral hosts are:

MICHELLE ENGLAND - a director interested in exploring experiential live art and installation, Michelle conducts live interviews with artists and performers.

TATT FAMILY VALUE - your guides for a fascinating journey through a world of ancient brick-a-brack and its stories.



Katie Etheridge

IMPULSIVE HOARDERS - anarchic comedy trio specialising in character based humour.

EMILY MAUGHAN - original singer song writer from the wilds of North Cornwall, joined by Matthew Dixon.

emilymaughan.co.uk

PAPA, QUEEN OF CABARET [FEAT. MINNIE] - unexpectedly re-available following cancellation of Papa's disastrous European tour.

*For further information please contact Katie.
Etheridge@falmouth.ac.uk*

Jono Whitehead is a theatre student and photographer. He's been working closely with our Lived Art performers in the lead up to the festival. His experience both on-stage and behind the scenes allows his work to reflect the performance experience at its very best.

www.jonowhitehead.co.uk
[@quickwittington](https://twitter.com/quickwittington)
jw140965@falmouth.ac.uk



Impulsive Hoarders, photo: Jono Whitehead Photography

WEDNESDAY

Wed 19 June

THE SWEETEST OF GRAIN INSOLITUS DANCE COMPANY

18.00 – 18.50

Studio: B

"For now we must rebuild... together we shall stand as one, and this beast shall prowl again."

Wed 19 June

FORCE OF HABIT 20 QUESTIONS THEATRE COMPANY

19.00 – 19.40

Studio: A

A physical, poetic and humerus piece about the game that is life, questioning the role of the performer and the audience in the everyday and challenging stereotypes in the modern world.

Wed 19 June

CAN WE STOP THIS? BROTHER PREPARE TO PARTY

19.50 – 20.35

Studio: E

We've only got one club. We go twice a week. But what actually happens?

[email: mike_624@hotmail.co.uk](mailto:mike_624@hotmail.co.uk)

Wed 19 June

LIVED ART LAUNCH

16.00

Studio: A and outside

The Performance Centre will be bursting at the seams at the opening of Lived Art 2013.

With guest Hamish Jenkinson and a celebratory choreography involving the entire body of graduating dancers, an extraordinary performance by Ikazuchi Taiko, and a promenade performance led by Marie Gabrielle Rotie.

Balloon launching essential.



© Steve Tanner

Wed 19 June
HONEYCOMB & MORTAR
EMILY TAYLOR AND BAND
20.40 – 21.25
Studio: K

Emily's music draws a sense of melancholic beauty, incorporating piano and voice, strings and acoustic guitar. Influences drawn from artists such as Angus & Julia Stone, Regina Spektor and composers like Ludovico Einaudi, Philip Glass and Yann Tiersen. Her ethereal sound carries a warmth and intensity that is both believable and truly heartfelt. She has supported Rae Morris and has been played on BBC Introducing.
email: emily-j-taylor@hotmail.co.uk

Wed 19 June
MAGNOLIA
STEP OUT OF THE LIGHT PRODUCTIONS
21.30 – 22.25
Studio: C

Limited capacity of 25 audience. A Trio of Decision Making Dance Performance. Unfazed/Sitting Comfortably/A Piece of False Starts
www.stepoutofthelight.wordpress.com

Wed 19 June
CHOY DRAGON
CHOY DRAGON
21.30 – 22.30
Studio: K

Improvised instrumental jazz/groove/punk to live visualisations.
www.choydragon.bandcamp.com



© Steve Tanner

THURSDAY

Thu 20 June
GIFT ECONOMY
BARDSBARTER
12.00 – 19.00
Studio: E

Through our practice in moneyless theatre over the last year, we have become very interested and passionate about the gift and moneyless exchange; their ability to form meaningful relationships and facilitate re-building of communities. We present to you 'Gift Economy' - a piece that we have created without the use of money, that celebrates innate human generosity. Durational & interactive. Please come back throughout the day.
email: bardsbarter@live.co.uk
www.bardsbarter.wordpress.com

Thu 20 June
UNTITLED
BECKY AND VERENA
12.00 – 13.00
Studio: C

A playful task based improvisation; using materials, words and the body
website: www.bexeroo.wix.com/scratz



Ugly Bird © Jono Whitehead

Thu 20 June
DON'T TRUST THE GROUND
UGLYBIRD
12.15 – 12.55
Studio: B

"You look around and start to suspect you might not exist... so you sit. You sit still. Because your limbs are so heavy, they are full of rain."

Intimate moments of story telling alongside fast paced physicality, exploring the limitations and boundaries imposed by repression and hope.

Thu 20 June
CHANGE PLEASE
NUSRET OZGUC
13.00 – 13.20
Studio: A

Change Please follows the journey of a man, telling his stories of being homeless.
Email: nusretozguc@hotmail.co.uk

The Bibliography

The Lived Art Archive team have collated, filed and installed a Kunstkammer of performance documents on the middle floor come and have a riffle.

Open throughout the festival.

Thu 20 June
HARPER & BAILIE

HARPER & BAILIE

13.25 – 13.55

Studio: G

Harper & Bailie are third year Theatre students, whose practise involves exploring, collaboration, relationship dynamics and the everyday

[email: jointatthehip@live.co.uk](mailto:jointatthehip@live.co.uk)

Thu 20 June
THE LITTLE SCREAM
ALISA LEIMANE

Every 10 minutes between 14:00 - 16:00

Pink Shed but sign up at meet at The Performance Centre reception.

[Part of ON SITE see page 17.](#)

Thu 20 June
'THE TASTE OF A LUNA MOTH'S TEARS'
WANDERLAND THEATRE

14.00 – 14.30

Studio: B

"Do you think butterflies are beautiful? They are so light so fragile so colourful. But does anyone consider moths?"

There are windows on wheels and staircases to nowhere.... would you float down from the top like a disembodied jumper falling silently to the ground and left there to gather the dust? This piece is about dust and about memories about humanity in all its decaying beauty.



Effigy image © Steve Tanner

Thu 20 June
OF THE MOTION

INNA KRASNOPER

14.40 – 14.50

Studio: J

Stop the motion – press the play!

[Email: www.inna.am](mailto:www.inna.am)

Thu 20 June
!ESCUA! (!LISTEN!)
FILIPE MOREIRA

15.00 – 15.30

Studio: E

The first presentation of the performance was in Porto (Portugal) in 2011 and was performed by Filipe Moreira, listener, and Nelson Rodrigues, who suffers from deafness. Nelson, contributes in the performance with a special form, including its form of communication, portuguese sign language, as poetic and aesthetic movement. Now a silent solo performance.

www.moreirafilipe.wix.com/official

Thu 20 June
UNTITLED

VERENA VUORI

15:30 -15.45

Walled Garden

[Part of the ON SITE see page 17.](#)

Thu 20 June
KATIKA/AFRIKA
STIRDANCECOMPANY

15.45 – 16.00

Studio: A

A performance to literally SHAKE the house down.

Thu 20 June
JAMES FREELY
JAMES FREELY

17.00 – 17.50

Studio: L

Who is James Freely? Investigation pending. Known information – acoustic/alternative singer-songwriter.

[Website: www.jamesfreely.com](http://www.jamesfreely.com)

Thu 20 June
PIAF
HARRIET WILSON

18.30 – 19.15

Studio: E

A performance portraying the life of the french icon Edith Piaf, displaying the ups and downs of her emotional roller-coaster life.

Thu 20 June
WIPE YOUR FEET
THE HOUSING PROJECT

19:30 – 20:30

Penryn

[Part of ON SITE see page 17.](#)

Thu 20 June
THE DRAWING ROOM

THE DRAWING ROOM

21.00 – 22.00

Studio: B

"The body as a canvas, a blank space ready to be designed, desired, owned, subjected to "the gaze" and manipulated. How does one body hold these designs without collapsing? Where does the individual truly exist and unfold from the folds of society, relationships and labels?"

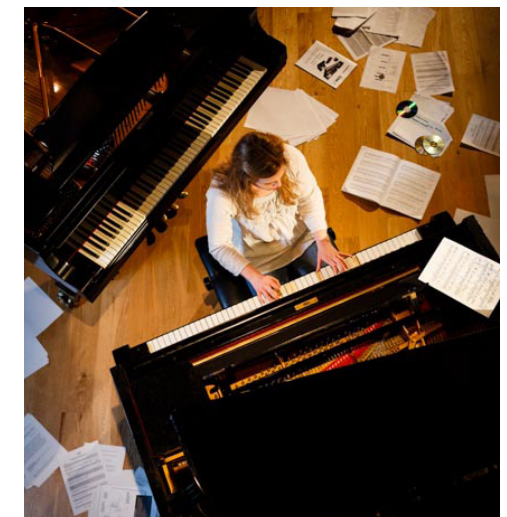
We present The Drawing Room...

Thu 20 June
BERLIN LIVE
ISAAC SAKIMA

22.10 – 23.20

Studio: K

Isaac Sakima performs a selection of songs from his album BERLIN as well as some previously unreleased tracks. Sakima's show will be an empowering musical experience of live contemporary music complete with a ten piece live band.



Emily Taylor © Steve Tanner

Fri 21 June
**PLAYING IN MINIATURE
 AND ME...**
 13.50 – 2.20
 Studio: E

This is NOT social networking.

Fri 21 June
**AIN'T NOBODY GOT TIME FOR
 THIS**
 STUMPS MUSIC THEATRE COMPANY
 14.30 – 15.15
 Studio: B

Do you want the truth or something
 beautiful?
www.facebook.com/StumpsMusicTheatreCompany

Fri 21 June
SENSES
 SENSES
 Meeting Point: The Performance Centre Foyer
 15:00 - 17:00

Journey lasts 20 minutes.
[Part of ON SITE see page 17.](#)

Fri 21 June
ONE MOMENT PLEASE
 SONOVAGUN THEATRE COMPANY
 15.20 – 15.55
 Studio: E

Two men with big ideas, strong views and
 few words.
[Email: vincenzo_martino@hotmail.co.uk](mailto:vincenzo_martino@hotmail.co.uk)

Fri 21 June
HANNAH'S PPP
 HANNAH CUMMINGS
 16.00 – 16.30
 Studio: L

Folk tunes.

Fri 21 June
INTERVENIENT
 SUMMATIONS
 16.00 – 16.45
 Studio: A

Summations Company has created an
 experimental piece called Intervenient. This
 piece is a performance and choreographic
 scored work also influenced by culture and
 the Alexander technique. It will be directed
 by chance and probability.

Fri 21 June
I
 GARETHJWATSON PRODUCTIONS
 18.00 – 22.00
 Studio: E

Understanding is Progression. This is a
 durational piece.

Fri 21 June
PIG FARM RECORDS
 18.00 – 19.00
 Studio: K

Falmouth University's student run record
 label.

Fri 21 June
EVOLVE THIS?
 AT WITS END
 18.00 – 18.40
 Studio: A

A piece about the almost end of the world,
 where nostalgia, dehumanization and the
 sense of impending doom create a tense
 atmosphere in which buffoonery and
 exhaustion unfold.
[Email: at-wits-end@live.com](mailto:at-wits-end@live.com)

Fri 21 June
INFERNO (HELL)
 FILIPE MOREIRA
 18.45 – 19.20
 Studio: B

INFERNO (HELL), is a contemporary dance/
 theatre performance with live music, where
 three bodies carry souls in sandbags. Bags
 with different histories about light and
 darkness.

Fri 21 June
LUMINOUS
 ELLEVER THEATRE
 19.25 – 20.10
 Studio: G

Experiencing and analysing the choices we
 make to get where we want to be...
 Limited capacity of 30.

Fri 21 June
WIPE YOUR FEET
 THE HOUSING PROJECT
 19:30 – 20:30
 Penryn

[Part of ON SITE see page 17.](#)

Fri 21 June
JON AND ALFIE
 JON AND ALFIE
 20.00 – 20.45
 Studio: L

Jon Dyer and Alfie Gidley are practicing folk
 musicians based in Cornwall. They perform
 folk music from all over the British Isles
 with Jon on Whistles, Flutes and Bodhran
 and Alfie on Guitar, Mandolin and Banjo.
 Infectious foot tapping tunes.
[Email: didleyfolk@gmail.com](mailto:didleyfolk@gmail.com)
[website: www.jonandalfie.weebly.com](http://www.jonandalfie.weebly.com)

Fri 21 June
CLERKE AND JOY
 CLERKE AND JOY
 12.00
 Studio: A

The Clerke and Joy Amateur Dramatics
 Society present a lecture of their tips for
 graduates. Indispensable advice about self
 employment, chocolate bars and crying in
 the shower.
www.clerkeandjoy.com

Fri 21 June
IN:EXISTANCE
 REVERSEFALL PRODUCTIONS
 13.00 – 13.45
 Studio: B

Four beings exhausting the possibilities of
 there being an end and dealing with the
 consequences.

Fri 21 June
LIFE ON THE ONE WHEEL

SMALLTALK

20.40 – 21.25

Studio: B

Life on the One Wheel reveals a journey of a man on a self imposed mission to save the world one smile at a time. Combining projection, lists, and autobiographical works, SmallTalk explores the gaps of the unspoken and the articles that are left out of the main news, but are sometimes more important to people's lives.

[Email: smalltalktheatre@live.com](mailto:smalltalktheatre@live.com)

www.smalltalktheatre.wordpress.com/

Fri 21 June
BRANO THE ARTIST

21.00 - 21.10

Studio: K

Taste of my lyric-based music, down to the soul or down to the hips.

[email: branotheartist012@gmail.co](mailto:branotheartist012@gmail.co)

[website: www.facebook.com/branoheartis](http://www.facebook.com/branoheartis)

Fri 21 June
DREW & BOB AND ALL THAT

21.30 - 22.30

Studio: K

Three years after they met, following countless disagreements and a lot of tape, Drew and Bob stand before you with a great band ready to (folk) rock, playing country music from the soul. Inspired by rejection, alcohol, many different venues, festivals and even a mini New York tour, they continue to write new material that will get your feet tapping and the whiskey flowin'!

drewandbob@live.co.uk

www.drewandbob.bandcamp.com

Fri 21 June
THE LIFE AND TIMES OF PETER

PERFORMANCE COMPANY: NUCLEAR
CHAMELEON

22.00 – 23.00

Studio: A

Who is Peter?

A fusion of cabaret and avant-garde opera, a musical mosaic.

Nuclear Chameleon explores through this piece the transcendent nature of personal facets, by breaking down and redefining the individual.

Fri 21 June
LITTLE LEAGUES

LITTLE LEAGUES

23.00 – 23.45

Studio: K

littleleagues.band@gmail.com

www.littleleagues.bandcamp.com

Fri 21 June
ME MYSELF AND I

PERFORMANCE COMPANY: BE ME

11.45 – 12.00

Studio: L

This piece is about three individuals who all have underlining issues in life that are kept behind closed doors.



Ellever Theatre © Steve Tanner

SATURDAY

Sat 22 June
THE CORRIDOR

LIVEDART invites you to sign up and/or wander down THE CORRIDOR, for a series of one to one performances, installations and choral interventions.

12.00 – 16.00

Music Practice Rooms C, D, E, F, G, H (top level of The Performance Centre – turn right at the Reception desk)

Some performances are on a sign up basis – sign up at Reception or just turn up.

Practice Room:

C: Dino Roveretti 'Missing Bear'. I am looking for something. Can you help? Are you looking for something? I can help. A ten minute one-to-one encounter. Sign up.

D: Verena 'Q&A' I will sit in one of the rooms and audience members can come in one by one and they can ask me a question that I can only answer truthfully. If they want I will also ask them a question.

E: Jacqueline Stringer: 'Gilmore's Eyes'. The life and death of a killer and a young woman in 1976. 'Gary don't need his

eyes to see, Coz Gary and his eyes have parted company'. A twenty minute, limited audience, cyclical performance. Sign up.

F: Michael Tew: 'Dead in the Water': an immersive installation, writing on a bedroom wall.

G: Michelle England: 'Aestheticism': a multimedia arts installation that explores a moment of stillness, reflection and visual pleasure in a solo experience.

H: Misri Dey: 'Bring a song and I will sing it for you.' A one-to-one performance. You bring a song that has meaning for you, on phone/MP3 and I will sing it straight back to you. An impossible offer, a sung catastrophe...

PLUS

'I'm looking for a girl' A corridor search, sung by Sarah Jones and Helen Cheshire, on the hour every hour.

Sat 22 June
SYNDICATE

THE COLLECTIVE

12.00 – 12.55

Studio: B

Powerful, Solo, Cultural, Transition, Learning, Self Exploration and Symbolic.

Sat 22 June
TAIKO ONGAKU

IKAZUCHI TAIKO

13.00 – 13.45

Studio: L

Intense and powerful drumming from the land of the Rising Sun. Buchi Awase, Chikyu Tai Kasai and Sankai Hokai.

Sat 22 June
AWAY FROM THE DUST
MARKETA JANDOVA

13.45 – 13.55
Studio: B

Dance on screen inspired by personal experience. This film shows two relationships with two different attitudes.

Sat 22 June
FERAL STAGE
MOURNING SUNS

14.30 - 15.30

Birmingham based alumni band. Poetically dark and beautifully strange musical collaboration, with close male and female harmonies, devoted guitars and a beating heart. Sixties psychedelic folk/rock influenced, 5 piece Birmingham Band.

"I fell in love with this from bar one - with its arresting vocal, bizarre lyric and glistening ethereal production, it was quite unlike any other music in this week's inbox."

Written by Tom Robinson of BBC INTRODUCING MIXTAPE.

www.soundcloud.com/the-mourning-suns

Sat 22 June
SENSES
SENSES

Meeting Point: The Performance Centre Foyer
15:00 - 17:00

Journey lasts 20 minutes.

Part of ON SITE see page 17.

Sat 22 June
SEEING AND BEING
EMILY MAUGHAN

15:15 – 16:00
Walled Garden

Part of ON SITE see page 17.

Sat 22 June
EVERYTHING BUT THE KITCHEN SINK

EFFIGY
16.00 – 16.35
Studio: A

A performance full of humour, heartbreak and heckling we break into the unseen and sometimes forgotten.

www.facebook.com/effigytheatre

Sat 22 June
A PLACE FOR SHADOWS
GHODI

17.00 – 20.10 Studio: E

Striking art and haunting sonic ambiences fuse to make an immersive free-roaming installation. Conceptually influenced by the psychology of Sigmund Freud, Carl Jung and Jacques Lacan. Music by Ghodi and artwork by Oscar Lewis.

Email: annihilation-process@hotmail.com

Website: www.ghodi.co.uk

Sat 22 June
TO THE POINT
VINCE AND FAYE

17.15 - 17.55 Studio: B

The first in a new collaboration between Vince and Faye in which they exercise their unique devising process, weaving a story around material generated from the playing of traditional children's games.

Sat 22 June
THE LITTLE SCREAM
ALISA LEIMANE

Every 10 minutes between 18:00 - 20:00

Pink Shed but sign up at meet at The Performance Centre reception.

Part of ON SITE see page 17.

Sat 22 June
DANGEROUS CREATURES
BIGM THEATRE

18.30 – 18.55
Studio: A

An exploration of women in theatre. A journey showing the role of the female artist on stage through music, song and movement.

Sat 22 June
WIPE YOUR FEET
THE HOUSING PROJECT

19:30 – 20:30

Penryn

Part of ON SITE see page 17.

Sat 22 June
'ASSEMBLE'
JULIA O. SYKALA

19.30 – 20.00 Studio: C

Situated in Tuckingmill Camborne, derelict and forgotten, Bickford-Smith Fuse Factory is now a sad and burnt example of its former glory. Once a functional work place, our interest explores the traces of humanity found within a person's movement whilst working mechanically inside a factory.

juliasykala@gmail.com

www.tresennance.wix.com/

[#!coming-soon-/cwwn](https://twitter.com/tresenncollaborative)



The Klezibians © Arda Tok

Sat 22 June
WHO NEEDS A BAND ANYWAY
BEN WILSON

19.45 – 20.45 Studio: K

Live performance using loop pedals and other effects also acoustic guitar and electric guitar with blues and pop style.

Sat 22 June
TWO
BEBEE HARVEY AND EMMA-JANE MARTIN

20.30 – 20.45

Studio: J

Sat 22 June
ONE FOR THE BIRDS
RANDOM BYSTANDER

21.00 – 21.45 Studio: A

A contemporary performance incorporating aspects of theatricality and the everyday.

[www.twitter.com/RdmBystander](https://twitter.com/RdmBystander)

Sat 22 June
GOOD RICE
WILFRED PETHERBRIDGE

21.20 – 22.00 Studio: L

Composition based around the Good Rice/Bad Rice experiments. Use of brass, percussion and electronics.

wilf_petherbridge@hotmail.co.uk

Sat 22 June
THE KLEZBIANS
THE KLEZBIANS

22.00 - 23.00 Studio: K

The Klezibians play their own unique take on Jewish Gypsy (Klezmer) Music.

klezibians@live.co.uk

www.theklezibians.co.uk

Sun 23 June
THE BRINY DEEP
 SALTY SHIPWRECK PRODUCTIONS
 15.00 – 15.45
 Studio: E

A girl eats a magical blueberry and turns into a blue bird....

Sun 23 June
THE SCHOOL OF NOISE
 16.00 - 17.00
 Studio: L

Free improvisations with acoustic and electric basses, percussion, objects and live electronics. With Federico Reuben, Thanos Liontiris, Andrea Rushton, Chris Jones and Keith Michael.



ON SITE...

...new performance in response to space, making place and the gaps between buildings. This work explores the ways in which context informs and generates performance, allowing place to speak to us through signs, habitation, history, sounds and footprints. It takes place at various locations across the Penryn Campus and in a house in Penryn.

THE LITTLE SCREAM
 ALISA LEIMANE

Pink Shed
 Thu 20 June 14:00 - 16:00
 Sat 22 June 18:00 - 20:00

The performance explores the artificial reality of the every day where the mind constantly questions the visual aesthetic. [10 minute slots. Book a place at The Performance Centre reception]

UNTITLED
 VERENA VUORI

Walled Garden
 Thu 20 June 15:30 -15.45

Approaching site in a physical, material based way, the work focuses on finding a connection between a human body/ water/air and the friction between material and skin.

WIPE YOUR FEET
 THE HOUSING PROJECT

Penryn
 Thu 20 June, Fri 21 June, Sat 22 June
 19:30 - 20:30

An 'in-house' immersive choreographic journey through private spaces made public. Please wipe your feet. [Limited audience capacity. Book a place at The Performance Centre reception]

SENSES
 SENSES

Meeting Point: The Performance Centre Foyer
 Fri 21 June, Sat 22 June 15:00 - 17:00
 [Journey lasts 20 minutes]

Senses are here to open up your mind to the intensity of the world around you and take you on a journey through the ins and outs of the relationship between sight and sound.

SEEING AND BEING
 EMILY MAUGHAN

Walled Garden
 Sat 22 June 15:15 - 16:00

Performative presentation regarding a six week site specific exploration discovering alternative ways of seeing and being.

THE WALLED GARDEN is a 3 minute walk from The Performance Centre. Leaving reception, walk up the slope, turn left, halfway up the hill in the bushes on the left is a door into the Walled Garden.

ON SITE is programmed by Katie Etheridge. For further information on performance and context at Falmouth, please contact: simon.persighetti@falmouth.ac.uk

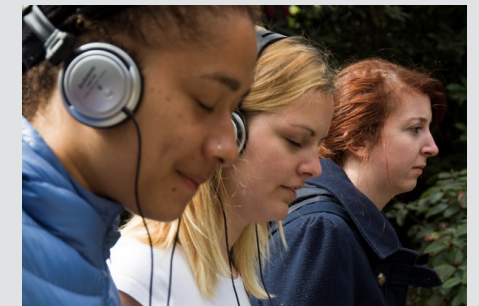
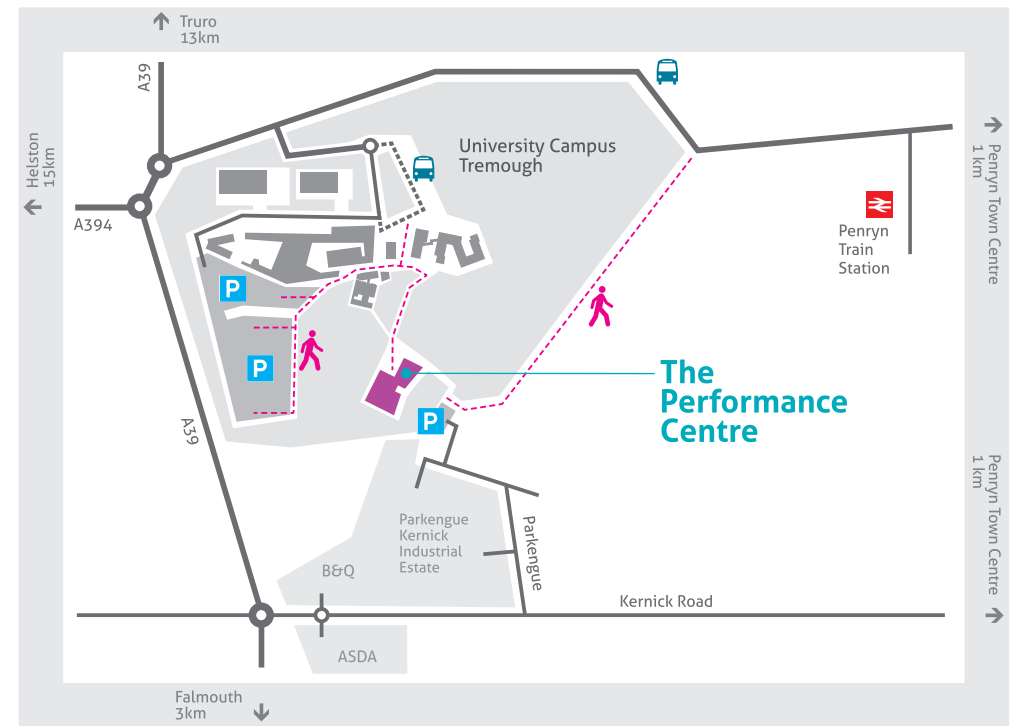




Image © Jono Whitehead



YOUR VISIT

By Rail

The Performance Centre is a 15 minute walk from Penryn Train Station. Change at Truro for branch line services to Penryn.

By Car

Type TR10 9LX into Sat nav

From the A39, at the B&Q/ ASDA roundabout, turn onto Kernick Road. After Jewson's turn left onto Parkengue. Follow the road to the end and turn left. Pass Allen and Heath and immediately take narrow access road on the right. Follow the un-tarmacked road through the gate and the car park for The Performance Centre is on the left.

Car Park

We now have a car park with limited spaces located adjacent to The Performance Centre,

which is free from 18.00 – 07.00 on weekdays, and from 13.00 on Saturday through to 07.00 Monday. No parking is allowed at other times.

The Performance Centre is also accessible from all other car parks on University Campus Tremough.

The Performance Centre is accessible for wheelchair users or those with specific access requirements. Please phone The Performance Centre if you have any access requirements or require assistance on 01326 255885

The Performance Centre

Falmouth University
Penryn Campus
Penryn TR10 9LX

Telephone 01326 255885
boxoffice@falmouth.ac.uk
www.theperformancecentre.org

STREET SUMMER SCHOOLS

Wed 24 to Fri 26
July
10.00 - 17.00

DANCE
EVENT MANAGEMENT
THEATRE
MUSIC

The Performance Centre at Falmouth University invites you to take part in the 2013 Street Summer School. With four strands in music, theatre, dance and event management to choose from, this continuing professional development opportunity will enable you to spend three days exploring art forms rooted in urban street culture. Working with internationally renowned artists and companies you will be based in the world class facilities of The Performance Centre at Falmouth University's Penryn Campus.

Dance strand: Zoonation

Join ZooNation Dance Company to learn a variety of Hip Hop dance styles. Award-winning Sadler's Wells resident Company ZooNation are renowned for creating pieces of hip hop dance theatre such as 'Some Like it Hip Hop'. The Company has performed at numerous major events including the 2008 Beijing Olympic and Paralympic Handover Ceremonies.

Event Management Strand: Walk the Plank

Spend three days with Walk the Plank learning about outdoor event management and production. From the closing ceremony of the 2002 Commonwealth Games to the opening of Turku 2011 European Capital of Culture in Finland, Walk the Plank create powerful events with mass appeal.

Music strand: Jason Singh and Laura Howe

Explore beatboxing, singing, experimental vocalisation and DJing with Jason Singh and Laura Howe. Working together you will create a number of songs and vocal pieces. Jason Singh is a prolific beatboxer, vocal sculptor and sound artist who has worked with Nitin Sawhney, the V&A and the BBC amongst many others. Laura Howe is a vocal artist, choral director and composer.

Theatre strand: Blast Theory

Spend three days working with internationally renowned company Blast Theory to explore how technology can be used to create site specific, participatory performances and interactive art. Blast Theory is known as one of the most adventurous artists' groups using interactive media, creating ground-breaking new forms of performance and interactive art that mixes audiences across the internet, live performance and digital broadcasting.

The Street Summer School is open to all professional practitioners working in the fields of performing arts and event management.

Tickets £150 (bursary funded places are available subject to eligibility)

FALMOUTH
UNIVERSITY

GRADUATE PRE-INCUBATION AWARD CEREMONY

Fri 5 July 2013
16.00 - 17.30

Falmouth University provides support to graduate start-up businesses in Cornwall through the Graduate Pre-Incubation Award. Please join us to celebrate with the new awardees for 2013-2014 and look back at some of the businesses we supported in 2012-2013.

Refreshments provided.

Free to attend

All welcome

FALMOUTH
UNIVERSITY

Lived Art Presents:

**RUN
RIOT**

SUMMER and END OF YEAR PARTY
featuring **THE CARNY VILLAINS,**
IMPRINTS, PAUL KELLY & DJ FRITZ

Sunday 23rd June
9pm

INC Falmouth (Fish Factory)
£3 Entry

